

Service Bulletin

S.B. No: 168

Title: INSPECTION OF COCKPIT FLOOR BENEATH PORT RUDDER BAR SUPPORT BRACKET

Classification: This Service Bulletin has been classified by SAL as Recommended

Compliance: At next Annual inspection.

Applicability: T67B, T67C, T67M, T67M-MkII, T67M200, T67M260 and T67M260-T3A

INTRODUCTION:

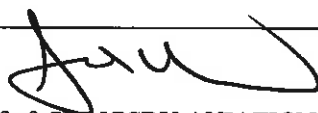
A case has been reported of damage occurring to the GRP beneath the port rudder bar support bracket and floor panel in the region of the anchor nuts.

This Service Bulletin requires an inspection and if necessary a repair to the damaged structure plus the incorporation of a strengthening doubler.

ACTION:

1. Check master switch, ignition switch and fuel are OFF. Disconnect external power and hangar aircraft if required.
2. Remove rudder pedals and bars.
3. Remove port floor panel.
4. Perform visual inspection for crack in GRP in region of the two anchor nuts directly below the port rudder bar support bracket and floor panel (ref Figure 1).
5. If signs of cracking exist repair area and install strengthening doubler in accordance with DOI T67C-149 (Ref Mod M919).
6. Following repair in accordance with DOI T67C-149, annotate logbook "SB 168 complied with Mod M919 incorporated."
7. If no cracking was found, then inspection Stage 4 of this Service Bulletin must be repeated at each annual inspection until Mod M919 is incorporated.

For assistance or repair scheme, please contact SAL Customer Support Department.

Approved by:  For and on behalf of SLINGSBY AVIATION LIMITED	Date: 19. Sep. 00.	Issue 1
Kirkbymoorside, York. YO62 6EZ Tel: 01751 432474 Fax No: 01751 431173 E-mail: SAL5@Slingsby.co.uk	Page 1 of 2	

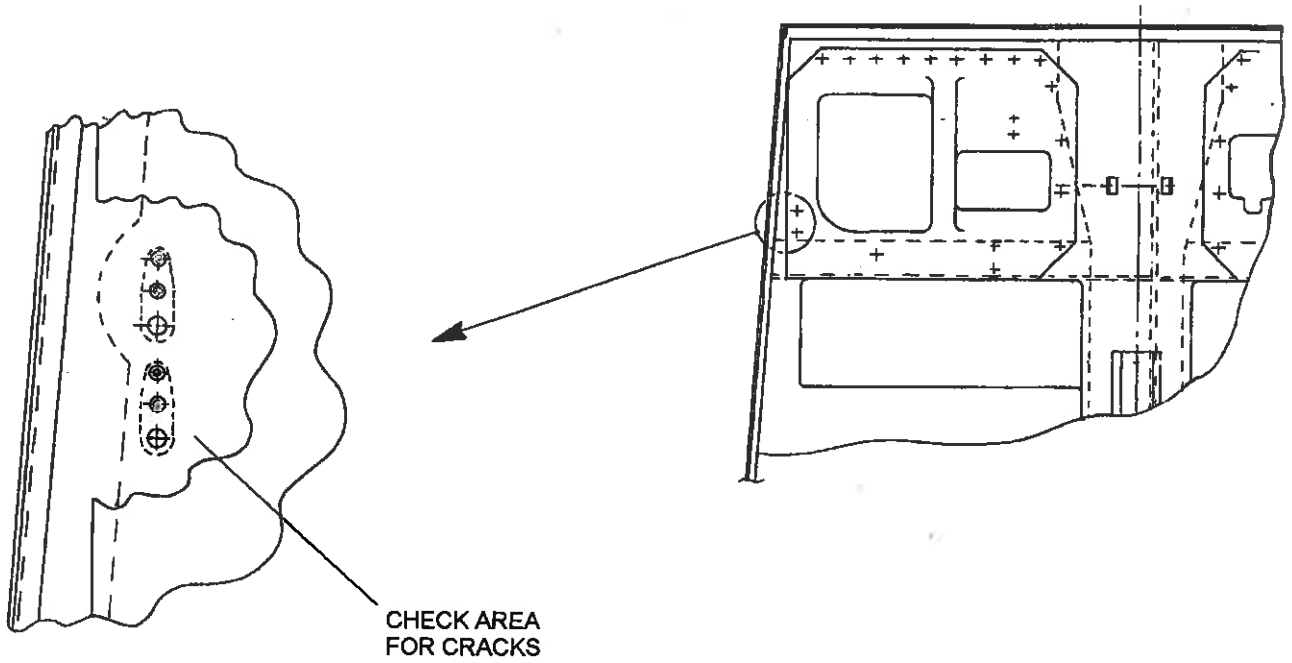


FIGURE 1 CRACK INSPECTION