

Service Bulletin

S.B. No: 118

Title: **INSPECTION OF FUEL SERVO THROTTLE AND MIXTURE LEVER EXTENSIONS FOR MOVEMENT AND WEAR**

Classification: This Service Bulletin has been classified by SAL as Highly Recommended

Compliance: At next 150 Flying Hour Check or 100 Flying Hour Check as applicable.

Applicability: T67M260 and T67M260-T3A

INTRODUCTION:

Cases have been reported of excessive wear/play to the fuel servo throttle and mixture lever extensions at their respective control fork/clevis pivot interface.

This is a one time inspection and rectification.

ACTION:

1. Remove engine cowlings and gain access to the fuel servo on the underside of the engine.
2. Measure the play in the throttle extension lever and mixture extension lever clevis joints, in the plane of action, ref Fig. 1. If the maximum play is up to 0.48mm, (.019 in) then no further action need be taken.

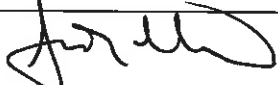
If play is greater than 0.48mm (.019 in) then it should be determined if either the clevis, clevis pin or lever extension are worn, by measuring the diameters.

Allowable Diameters:

Clevis Pin	⌀	Min 4.67mm (.194 in)
Clevis Hole	⌀	Max 4.9mm (.193 in)
Lever Extension Hole	⌀	Max 5.5mm (.203 in)

Replace relevant defective part/s as applicable.

3. Inspect lever extensions and washers in the area of the clevis joint for excessive wear in the sideways direction, ref. Fig. 1. Lever extension thickness in this area must be 2.5mm (.098 in) or greater. If less than 2.5mm (.098 in) replace extension T67G-50-599.

Approved by:  For and on behalf of SLINGSBY AVIATION LIMITED	Date: 9/4/99	Issue 1
Kirkbymoorside, York. YO62 6EZ Tel: 01751 432474 Fax No: 01751 431173 E-mail: SAL5@Slingsby.co.uk	Page 1 of 3	

4. If extension is satisfactory, ref para 3 above, but sideways play is in evidence, then it is acceptable to position further washers (AN960-10 light or regular or SP127/D SAL Code 126-23-754) between clevis fork and/or under split pin.
5. Annotate Logbook "SAL SB118 complied with".

A modification M821 "Introduction of Modified Mixture and Throttle Operating Levers, Precision Fuel Injector Servo" which provides levers of the required length without recourse to separate extensions, is currently in preparation.

For replacement parts, Mod Bulletin M821 and/or further information, please contact SAL Product Support Department.

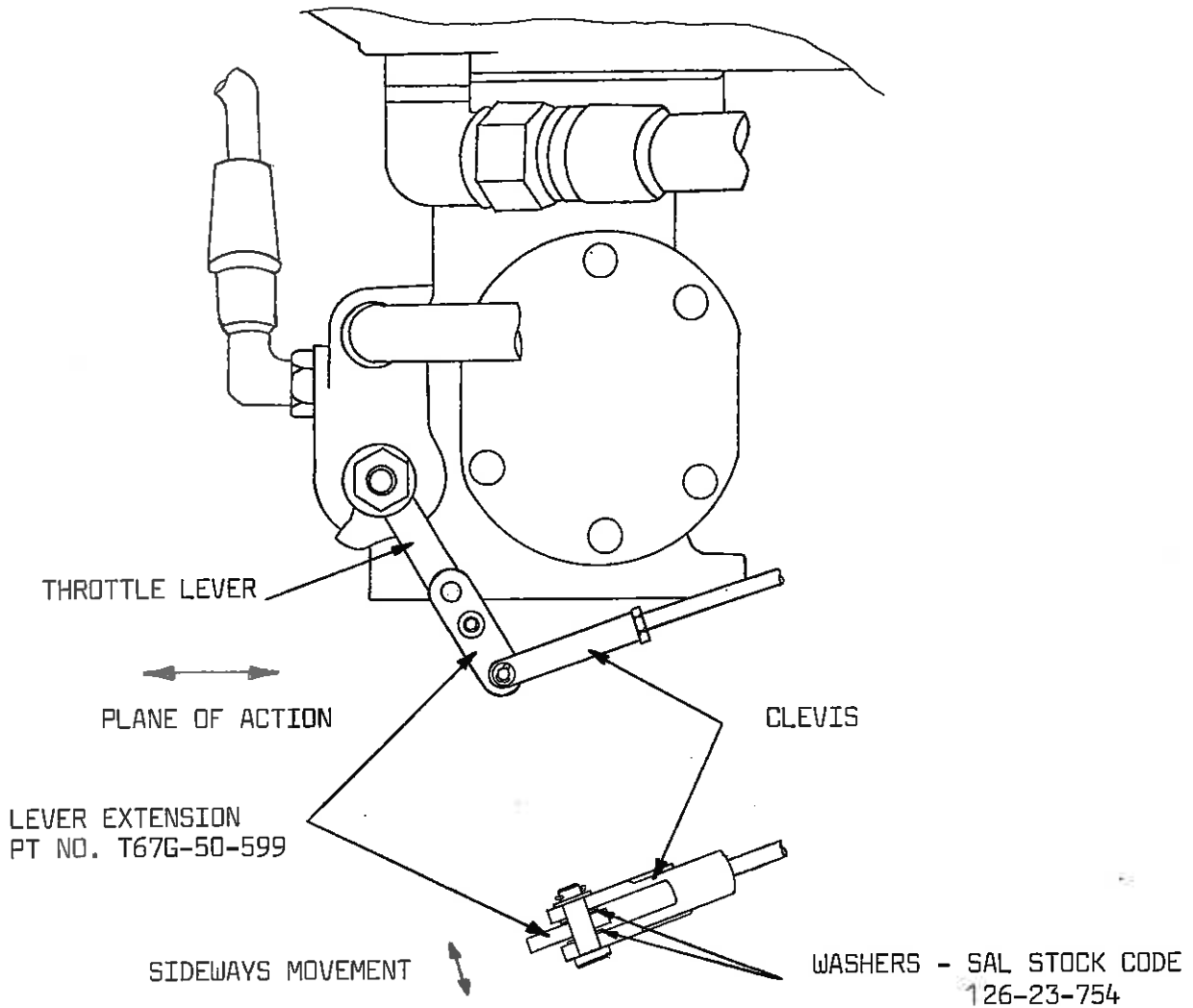


FIG 1
FUEL SERVO ASSY, PORT SIDE, SHOWING MIXTURE LEVER & EXTENSION
THROTTLE LEVER ON STARBOARD SIDE