**SERVICE BULLETIN**

SB No. 014

Issue No. 2

TITLE BEARINGS IN CONTROL COLUMN AILERON TIE ROD**CLASSIFICATION** This has been classified as Mandatory by CAA**COMPLIANCE** At next 50 hr inspection and 150 hr inspections thereafter**APPLICABILITY:**

All T67A,B,M,M-MkII, and M200 aircraft.

INTRODUCTION:

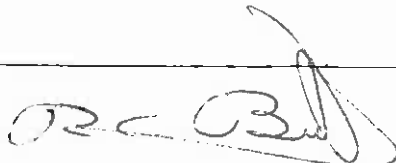
An isolated occurrence has been reported of the 4 bearings in the control column aileron tie rod coming loose in their housings.

ACTION:

1. Remove port and starboard control column gaiters.
2. Inspect, using a torch and mirror as necessary, the 4 bearings in the control column aileron tie rod for correct locations in their housings. See sketch.
3. If any bearings are loose or out of position, proceed as follows:
 - 3.1 Remove seats - for method see Maintenance Manual Section 3.4.1 which includes seat removal. Ref. GRP aircraft. For T67As remove seats, centre consoles and control covers.
 - 3.2 Remove control column tie rod.
 - 3.3 Reassemble the bearings to their housings using Loctite Studlock 270 adhesive, and "centre punch" in 3 places at 120° pitch on both sides.

N.B. Check inner ball for full and free movement.
 - 3.4 Refit rod and seats by reverse action of 3.2 and 3.1 above.
4. Annotate aircraft log book Service Bulletin No. 014 satisfied.
5. If bearings were loose or out of position, advise the undersigned as soon as possible.

ISSUED BY:

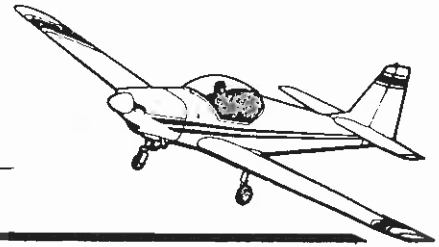


Date 19.2.87

for and on behalf of SLINGSBY AVIATION PLC

Kirkbymoorside York YO6 6EZ England Tel 0751 32474 Telex 57597

Page 1 of 2



SERVICE BULLETIN

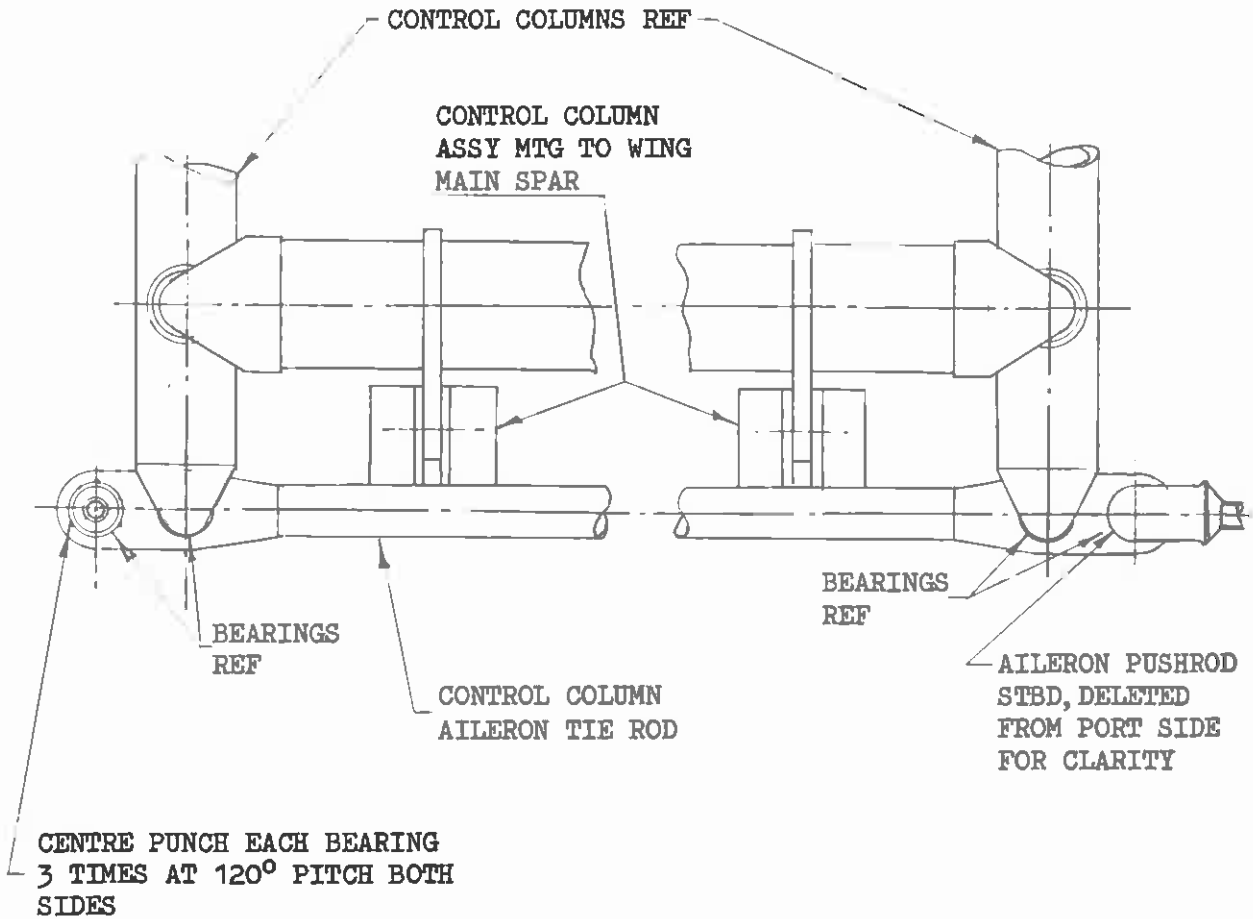
SB No. 014

Issue No. 2

TITLE BEARINGS IN CONTROL COLUMN AILERON TIE ROD

CLASSIFICATION This has been classified as Mandatory by CAA

COMPLIANCE At next 50 hr inspection and 150 hr inspections thereafter



VIEW SHOWING RELEVANT BEARINGS

ISSUED BY:

[Handwritten signature]

[Handwritten initials]

Date 19.2.87

for and on behalf of SLINGSBY AVIATION PLC
Rugbyville, Leamington Spa, Warwick CV32 9JF, England. Tel: 01927 541111 Fax: 01927 541112

Page 2 of 2