**SERVICE BULLETIN**

SB No. 034

Issue No. 1

**TITLE**

RUDDER UPPER AND LOWER HINGE SUPPORT ANGLES - INSPECTION

**CLASSIFICATION**

This Service Bulletin has been classified as Mandatory by the U.K. C.A.A.

**COMPLIANCE**

To be carried out at each 150 hour inspection until Mod M394 is incorporated.

**APPLICABILITY**

All T67 variants.

**INTRODUCTION:**

Isolated incidents of exfoliation corrosion have been reported on rudder hinge brackets (ref. 16 and 24).

**ACTION:**

At the next and each succeeding 150 hr inspection until Mod M394 is incorporated:

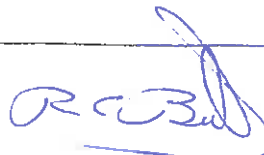

1. Inspect the rudder hinge angles, 4 off in total, for exfoliation corrosion.
2. If any exfoliation corrosion is found, contact Slingsby Aviation Product Support Dept.

Note: Mod M394 introduces anodised rudder hinge angles.

**ISSUED**

17 NOV 1989

ISSUED BY:



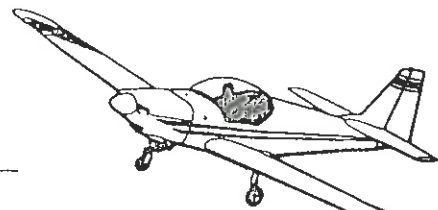
for and on behalf of SLINGSBY AVIATION PLC

Kirk Dymmoorside York YO6 6EZ England Tel 0751 32474 Telex 57597

Date 6<sup>th</sup> Nov 1989.

1 of 2

Page of



**SERVICE BULLETIN**

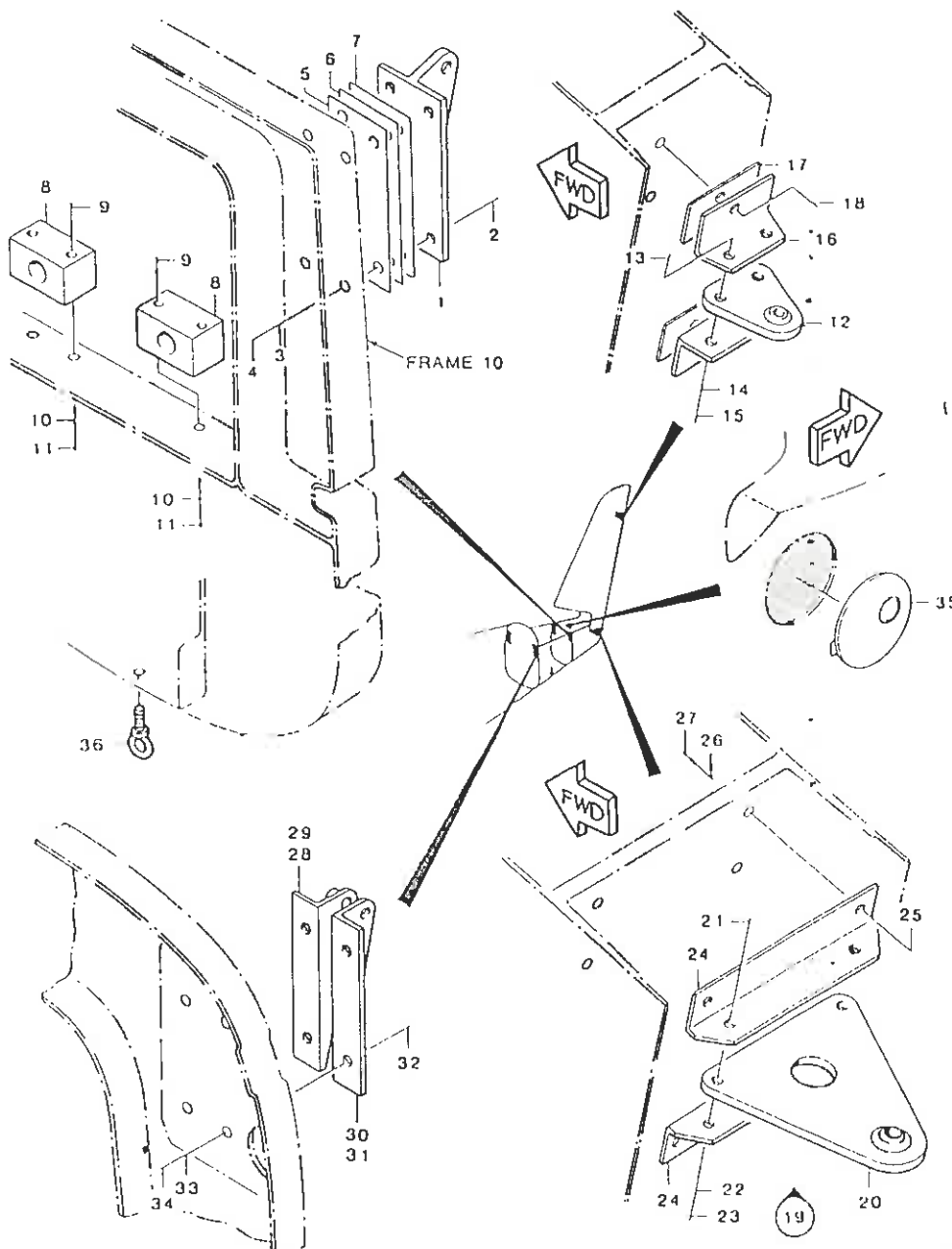
SB No. 034

Issue No. 1

TITLE

RUDDER UPPER AND LOWER HINGE SUPPORT ANGLES - INSPECTION

CONTINUED



Approved:

*B Mellan*

Date:

*6<sup>th</sup> Nov 1989*

Page

2

of 2