

SERVICE BULLETIN

SB No. 015 Issue No. 1

TITLE	RUDDER PEDAL TO SIDEWALL AND RUDDER CABLE CLEARANCES
CLASSIFICATION	This Service Bulletin has been classified as mandatory by the CAA
COMPLIANCE	(a) Before further flight) after receipt (b) Within 50 flying hours) of this Bulletin

1. APPLICABILITY:

All GRP T67 aircraft embracing Works Numbers 2000 to 2020 and 2023 to 2034.

2. INTRODUCTION:

A recent report has highlighted the possibility of the left hand pilots left hand rudder pedal fouling the fuselage plastic trim panel. This Service Bulletin (S.B. No 015) describes the inspection of clearances between plastic trim panel and rudder cable with rudder pedals, and rectification actions required to achieve clearances.

3. ACTION:

A. Before Next Flight.

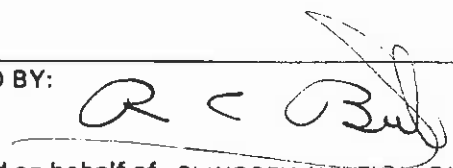
3.1 Inspection (Ref. Fig. 1, page 3).

Check the minimum rudder pedal to intercostal clearance and the minimum rudder pedal to rudder cable turnbuckle bolt clearance in any configuration port and starboard, with a light sideways force on the pedals (aprox. 10 lbf or 4.53 kg) applied in a direction to minimise the gaps.

If the smallest clearance found is:

- a) More than 10mm proceed to para 3.2.
- b) Between 5mm and 10mm the aircraft is to be placarded "No Aerobatics", and the aircraft may not be used for aerobatics or spinning until Mod M232 "Introduction of Rudder Pedal Packing for Increased Clearance of Surrounding Components" is incorporated at the next 50 hour check. See para 3.2.
- c) Less than 5mm Mod M232 is to be incorporated before further flight (excluding any necessary positioning flights for incorporation of the mod). See also Para 3.2.

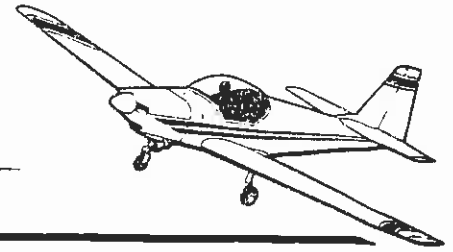
ISSUED BY:



Date 5.1.87

for and on behalf of SLINGSBY AVIATION PLC
Kirkmoorside York YO6 6EZ England Tel: 0751 32474 Tele: 57597

Page 1 of 3

**SERVICE BULLETIN**

SB No.

015

Issue No.

1

TITLE

RUDDER PEDAL TO SIDEWALL AND RUDDER CABLE CLEARANCES

CONTINUED

3.2 Inspection (Ref. Fig. 1 Page 3)

3.2.1 Check that the plastic trim panel is under intercostal ideally by 10mm, ref. view on Arrow 'A' Fig.1.

3.2.2 Check for distortion in plastic trim panel.

3.3 Rectification with reference to paragraph 3.2.

3.3.1 If plastic trim panel is not under intercostal place it under. If difficulty is encountered whilst attempting to replace plastic trim panel the following solutions are recommended:

(i) Remove excess Redux etc at intercostal/longeron interface. Do not damage items.

(ii) Apply hot air to plastic trim panel and push into position.

(iii) Cut a small notch in plastic trim panel the width of longeron and intercostal, apply hot air to fit into position.

3.3.2 Apply hot air to plastic trim panel to restore it to its original shape. Continue as paragraph 3.3.1 if required.

For further information and/or Modification Bulletin M232 contact Product Support Manager at address quoted on page 1 of this Service Bulletin.

Approved:

Date:

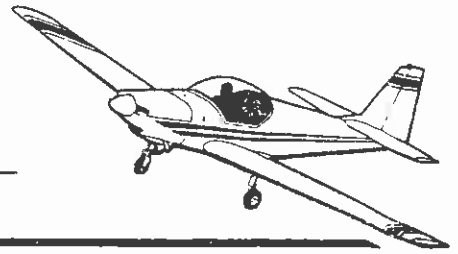
5.1.87

Page

2

of

3



SERVICE BULLETIN

SB No. 015

Issue No. 1

TITLE

RUDDER PEDAL TO SIDEWALL AND RUDDER CABLE CLEARANCES

CONTINUED

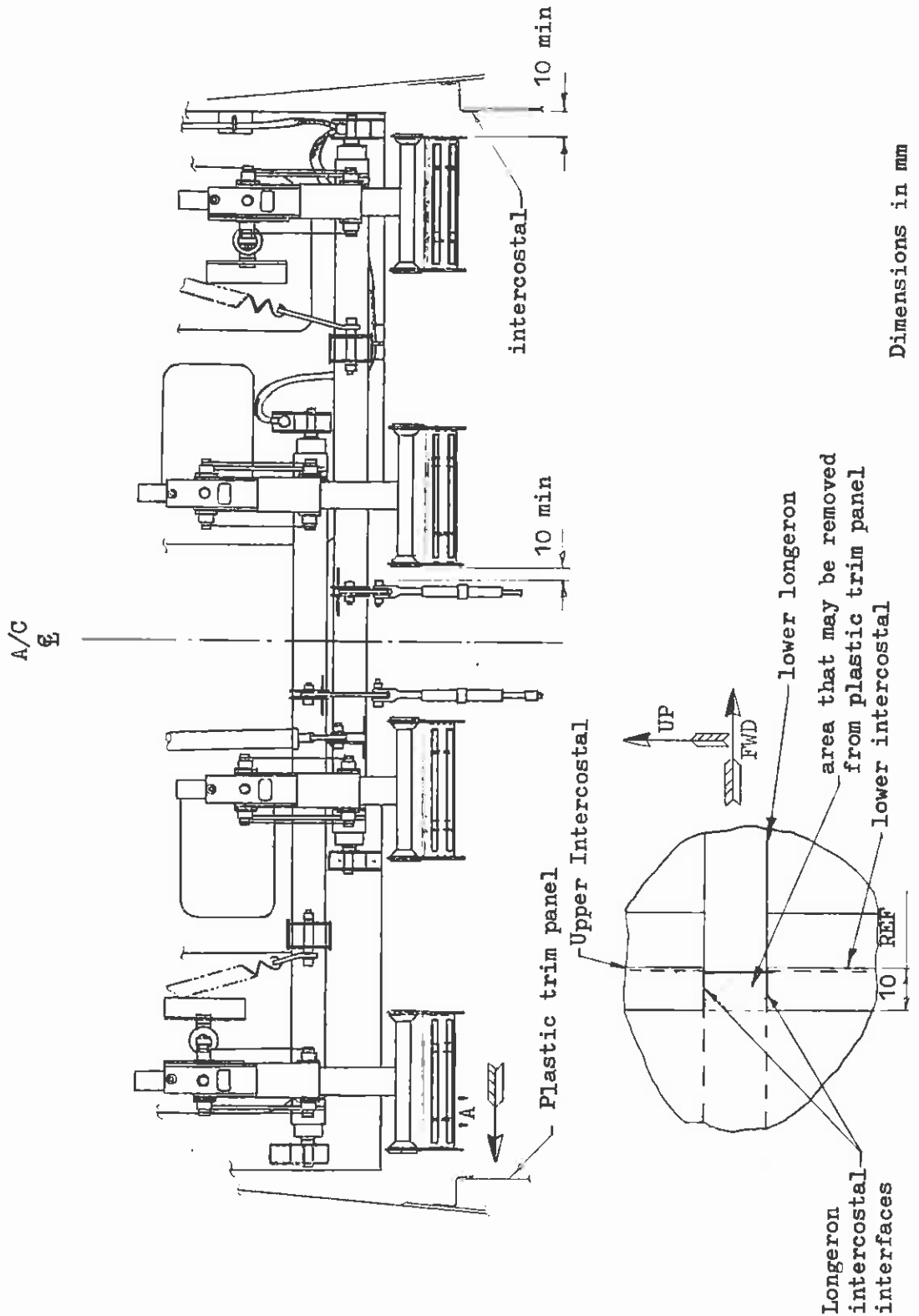


FIGURE 1

Approved:

Date: 5.1.87

Page 3 of 3